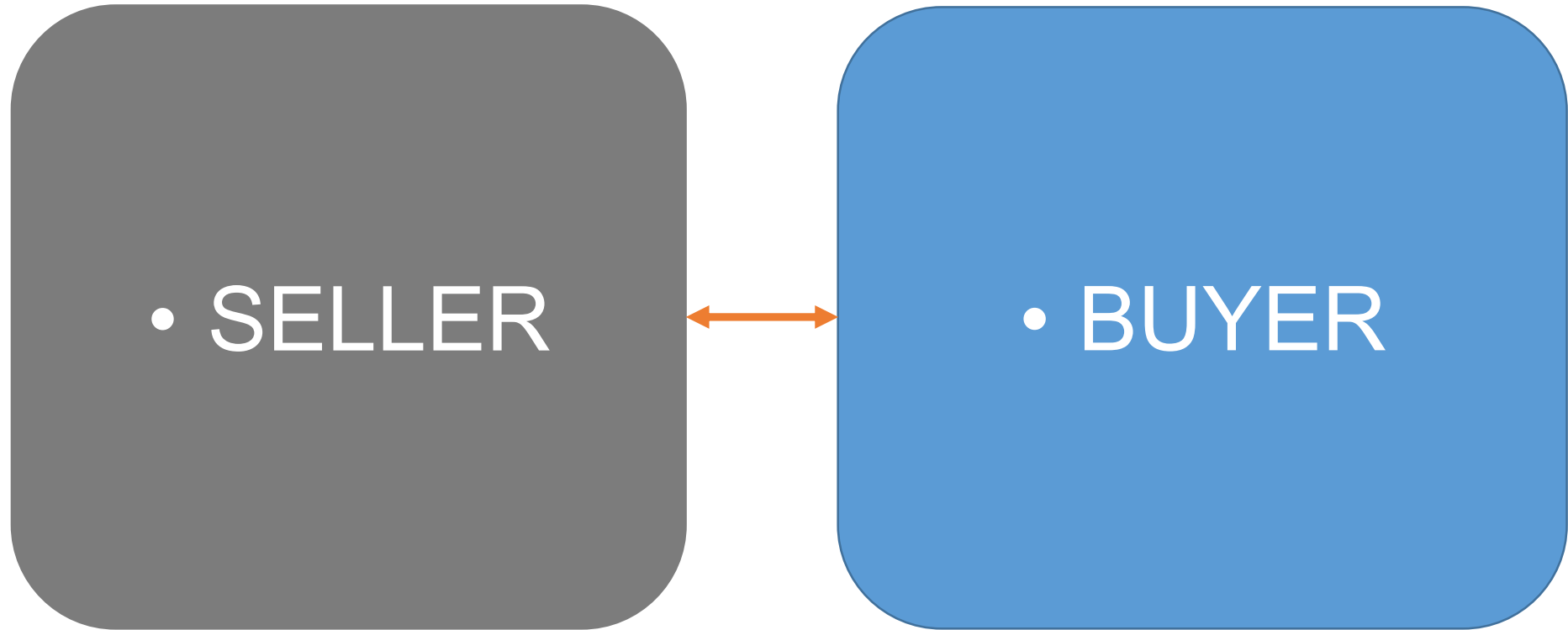




**“Values and benefits of a PCS, links
to SW and WTO TFA”**
Maritime Logistics Information Flows

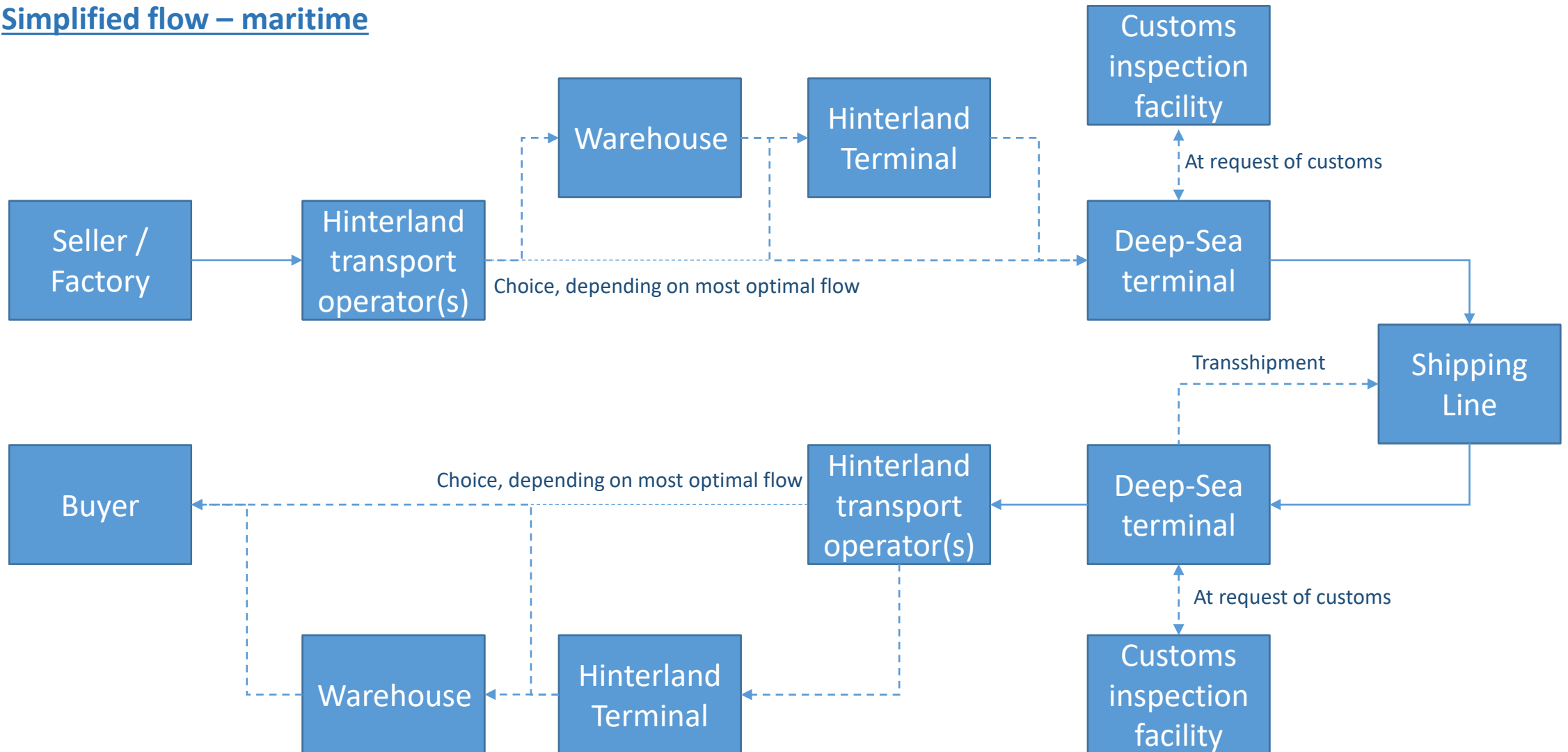
Mees van der Wiel - Portbase
11 april 2019

It looks so easy...

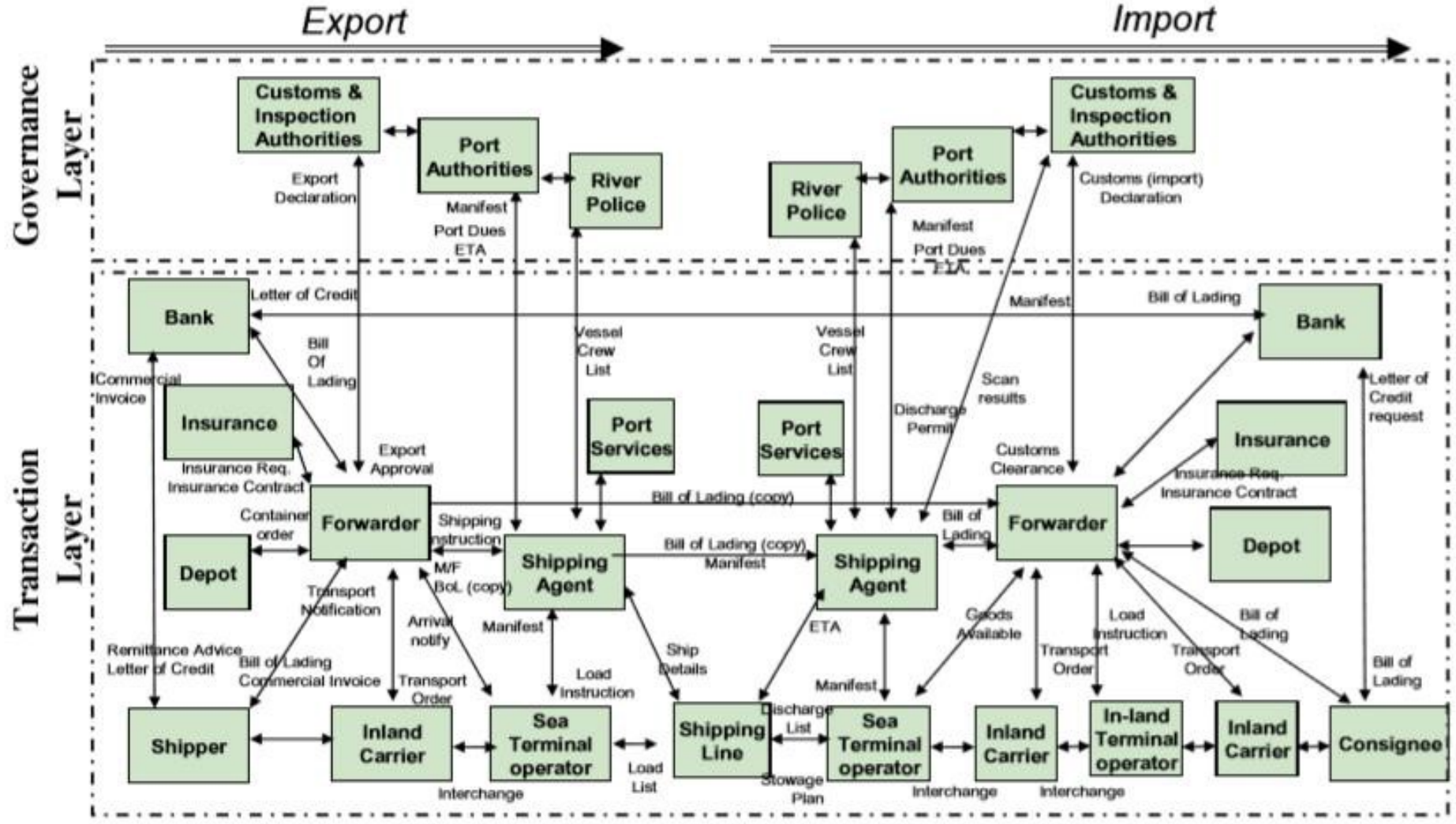


Physical flow of goods – One way traffic, from seller to buyer

Simplified flow – maritime



It looked so easy...

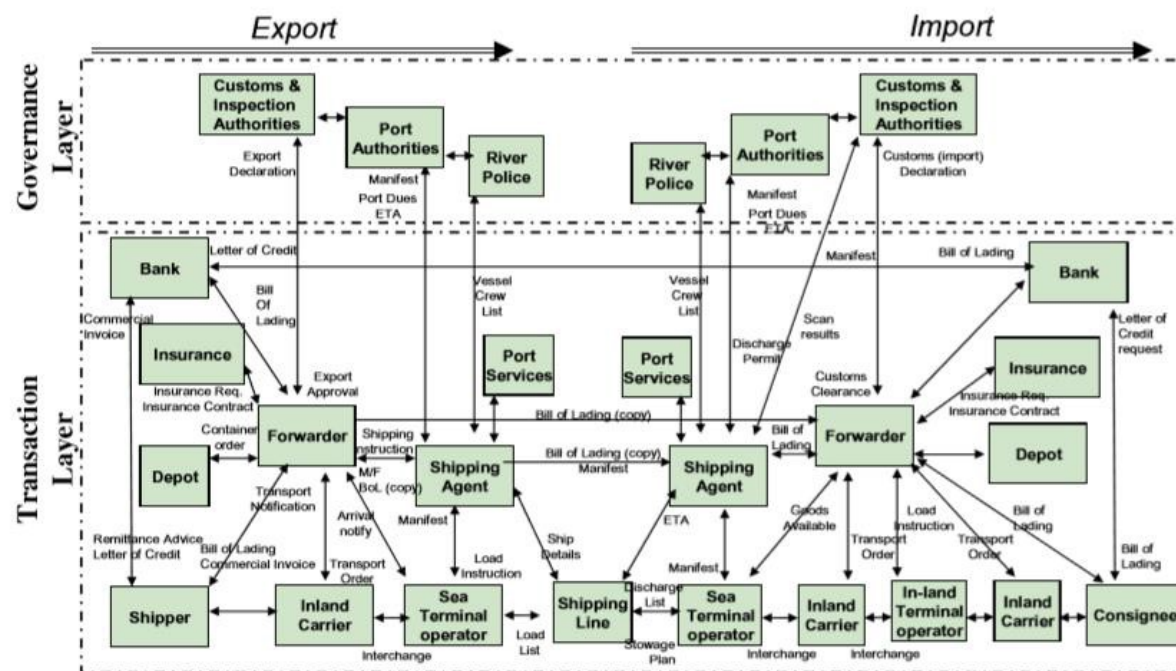


Information flows in the transaction and governance layers (van Baalen et al. 2008)

And it's even worse...

Because:

- visualized the optimal information flow of container transport
- data elements from different sources combined in one report
- flows presented as one line. However, the data often goes back and forth multiple times.
- No status updates visualized



Visualizing all sources of each information element and their flows in one overview would be impossible!

Complexity and the impact on data quality

Problems

- Administrative burden of reporting formalities
- Quality issues along the information chain
- Parties only have knowledge on their own activities, not on the ones around them
- Automation, standardization and harmonization often lacking because of the variety of parties
- No incentive on improving quality. Parties only focus on own process.

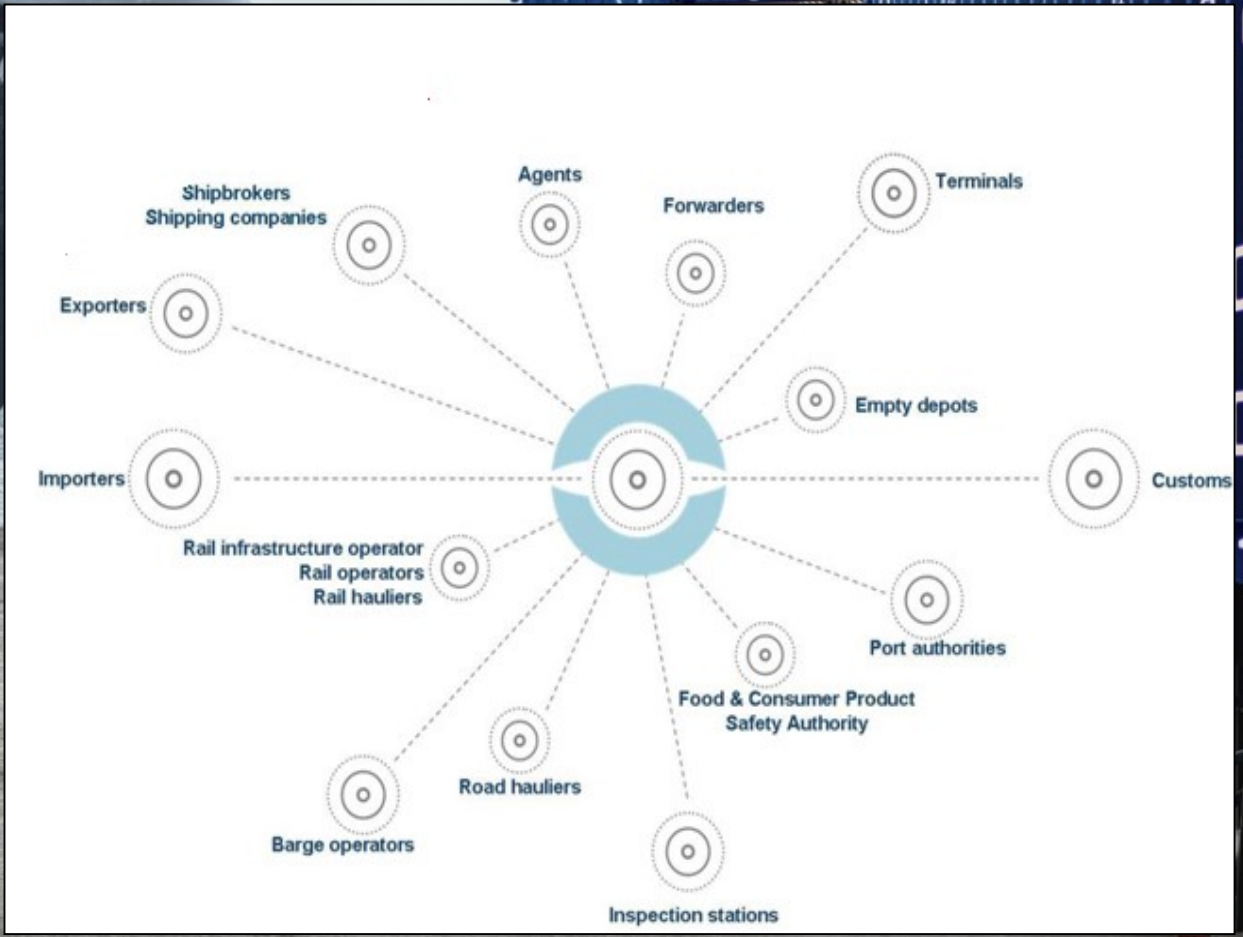
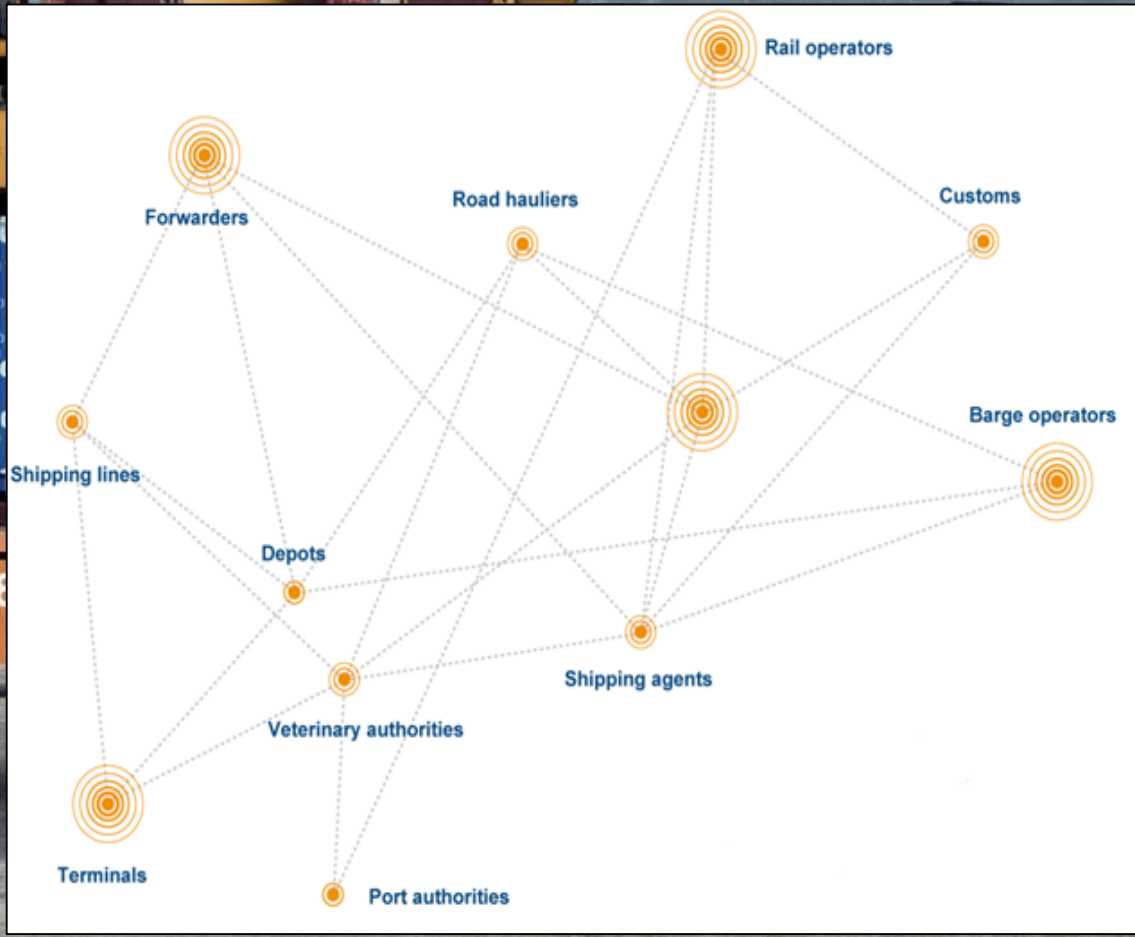


This is where Community Systems step in

Without PCS



With PCS



Benefits for Supply Chains

- One-stop-shop for automated information exchange
- All governments and related processes are connected
- Use of standard messages and procedures throughout the ports

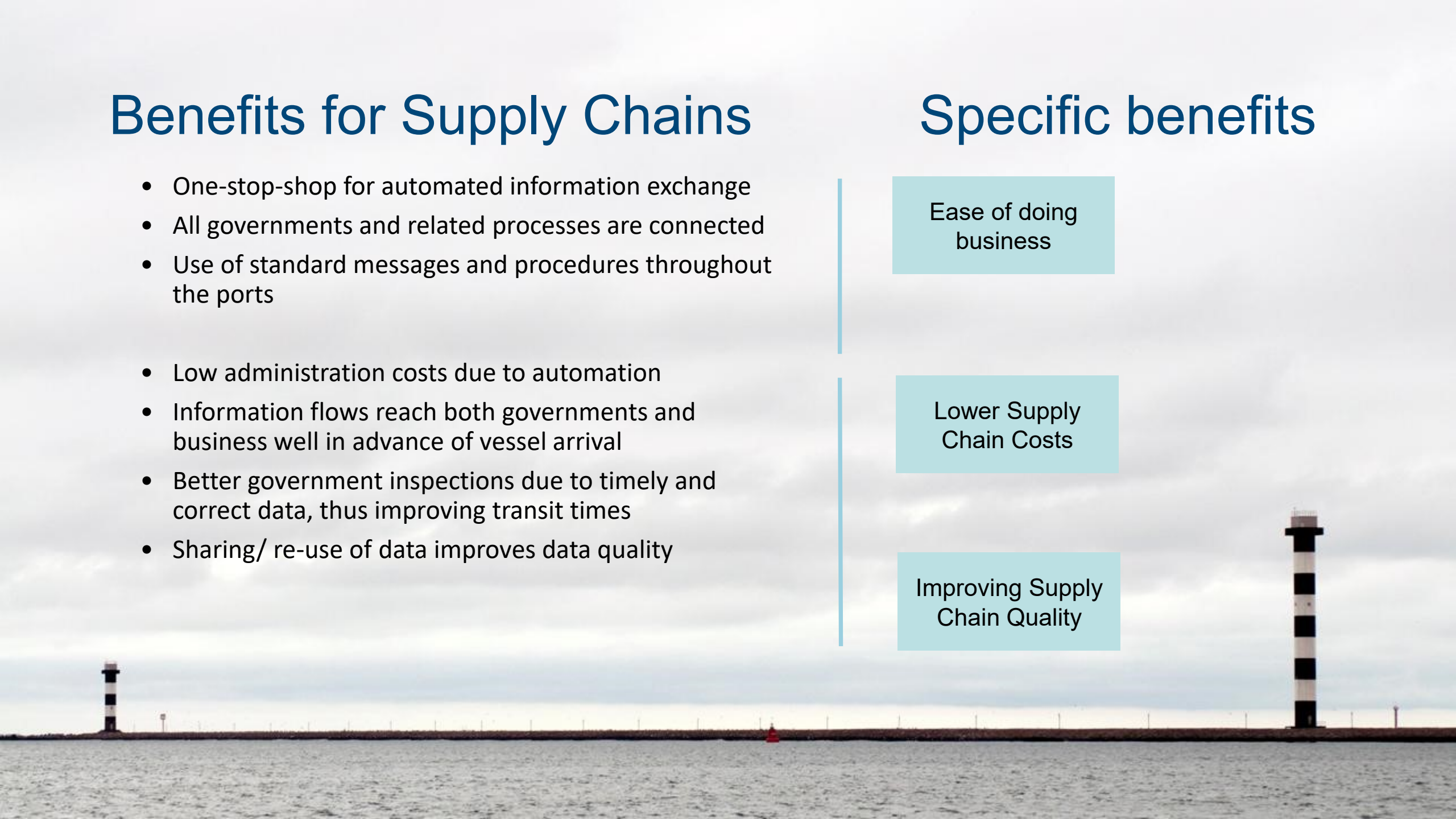
- Low administration costs due to automation
- Information flows reach both governments and business well in advance of vessel arrival
- Better government inspections due to timely and correct data, thus improving transit times
- Sharing/ re-use of data improves data quality

Specific benefits

Ease of doing business

Lower Supply Chain Costs

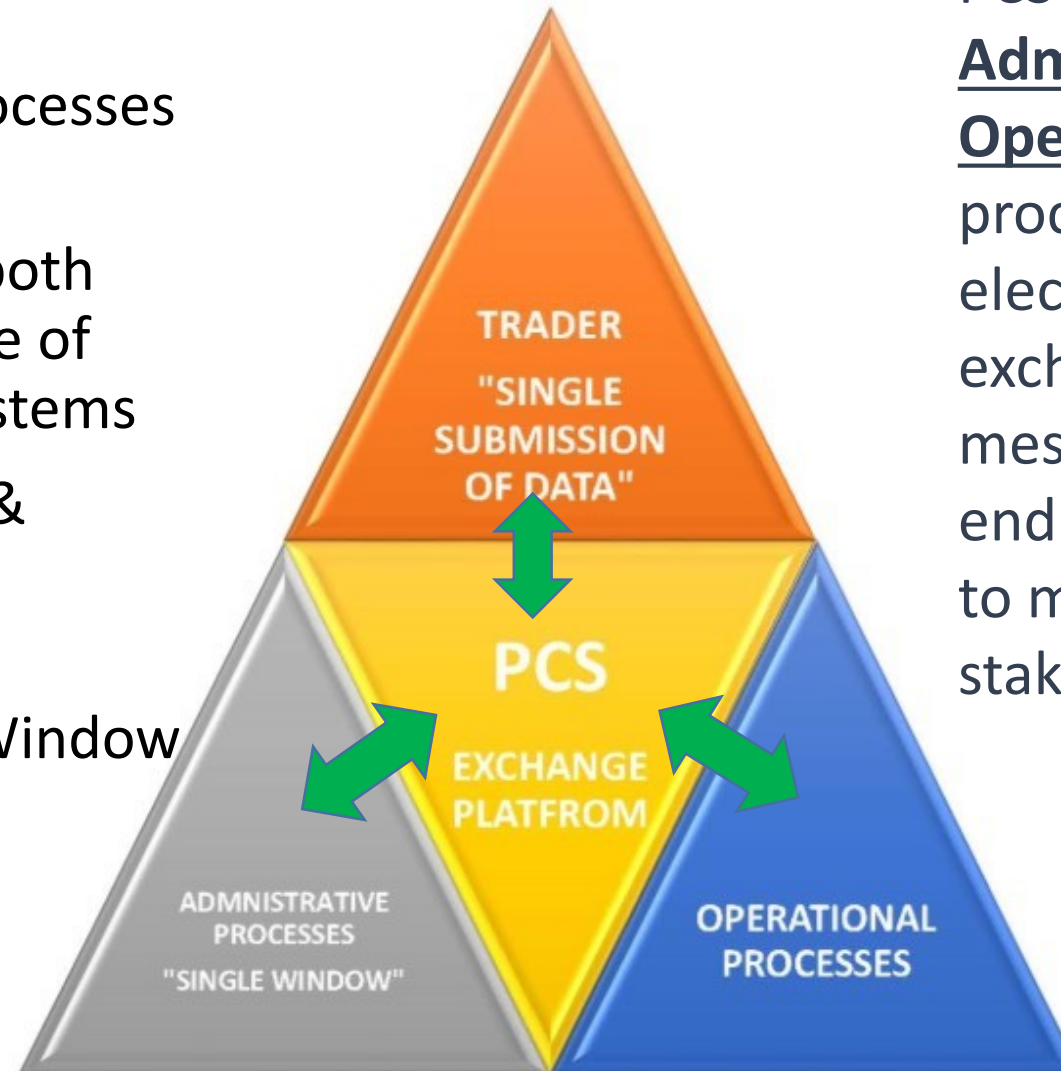
Improving Supply Chain Quality



PCS – A Trade Facilitation Tool

A PCS:

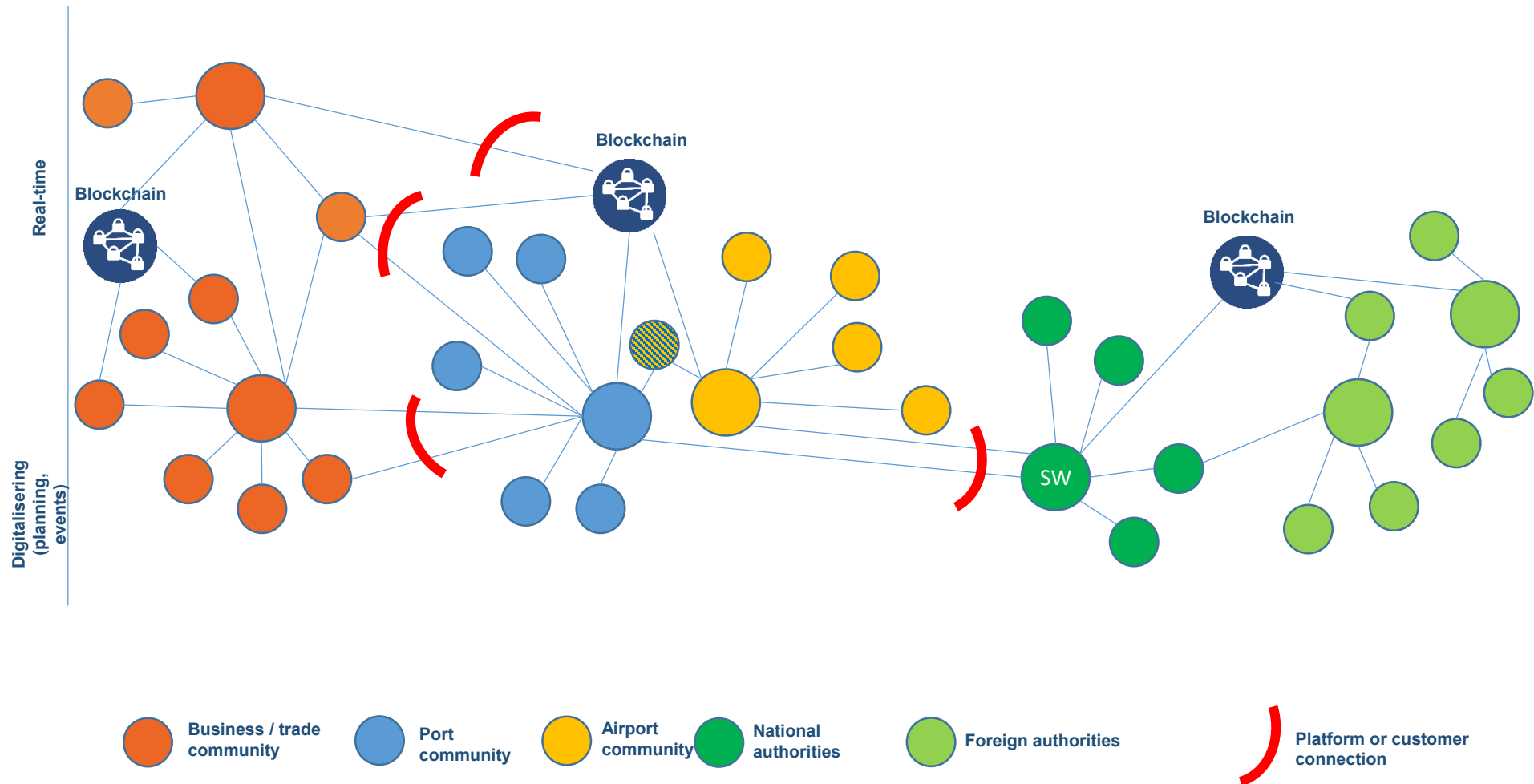
- Links administrative processes to operational ones
- Thus re-using data for both purposes and the re-use of existing Information Systems
- Creating Transparency & reducing trade burdens
- Can also act as a Gateway into a Single Window



PCS thus link Administrative and Operational procedures electronically via the exchange of messages on a end to end basis (machine to machine) with all stakeholders.

Vision towards the future

Connected platforms in information-exchange trade and transport



Questions?



**Thank you for your
attention**

